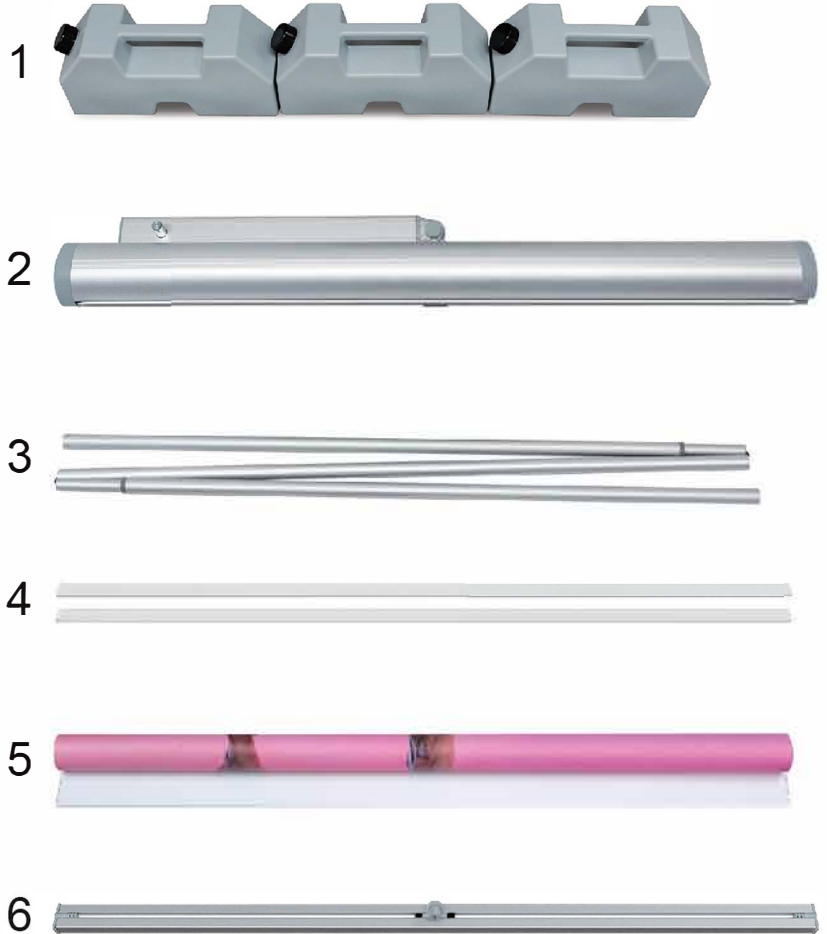


# OUTDOOR ROLL UP BANNER INSTRUCTION



1. Water tank

2. Aluminum main body

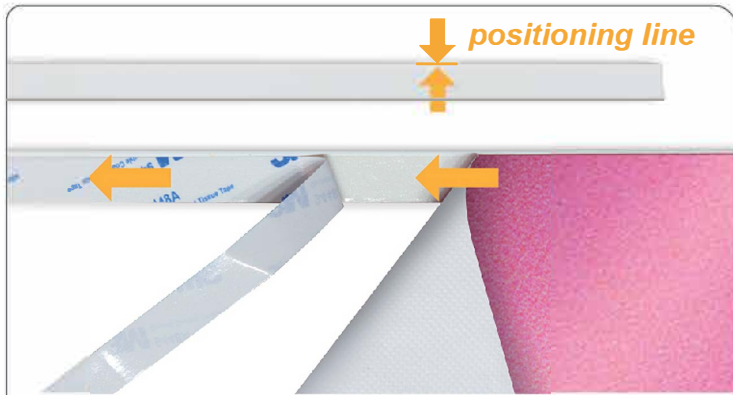
3. Support pole

4. Plastic strip *(in the poster clip and main body.)*

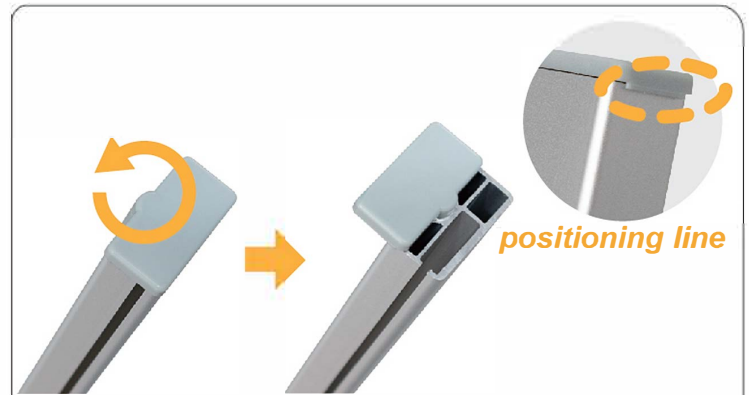
5. Graphic

6. Plastic strip

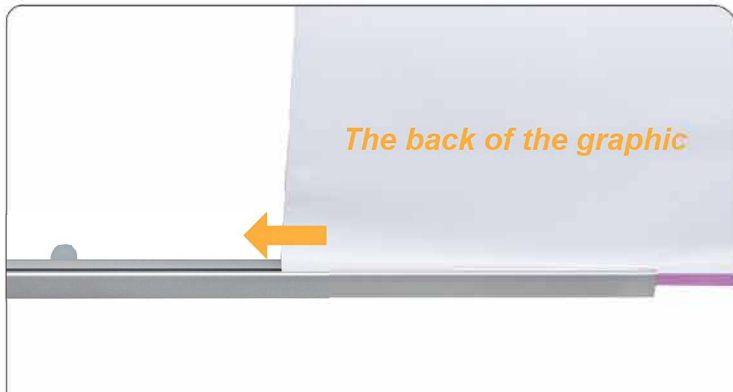
# ·Graphic installation instruction



**1.** Tear off the 3M double-sided tape. Put the graphic facing upward, paste the two ends of the picture along the positioning line of the plastic strip .



**2.** Turn the lid.  
*(Please note that both end caps have one side with a positioning line.)*



**3.** With the head of the pole facing up, fold the graphic in half once and insert the graphic with the another side facing up. And close the lid.



**4.** Bend the graphic and align it with the slot into the base. And insert the graphic into the base.

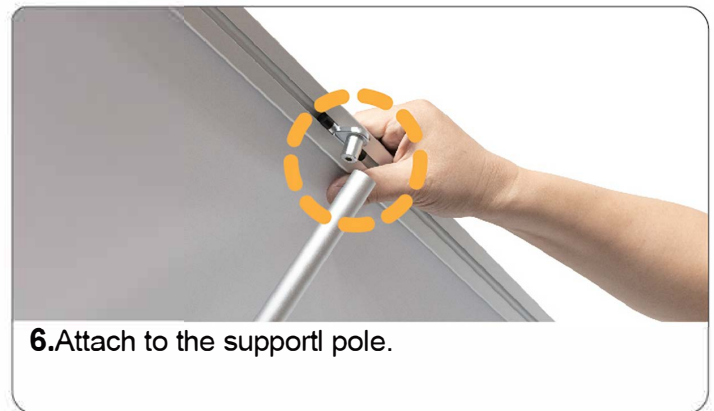
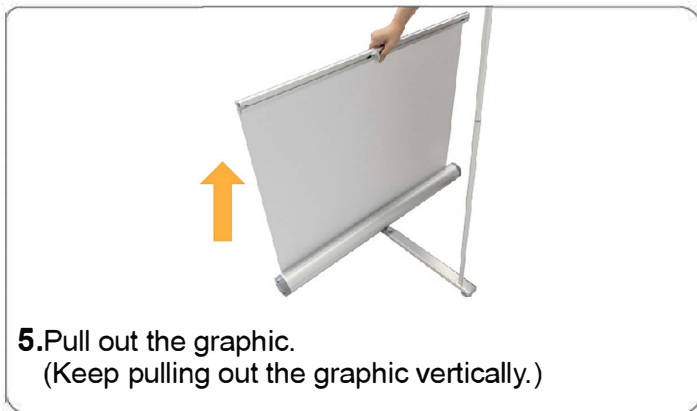
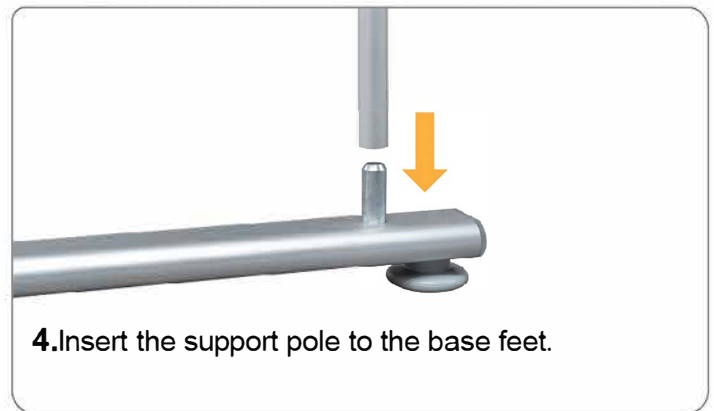
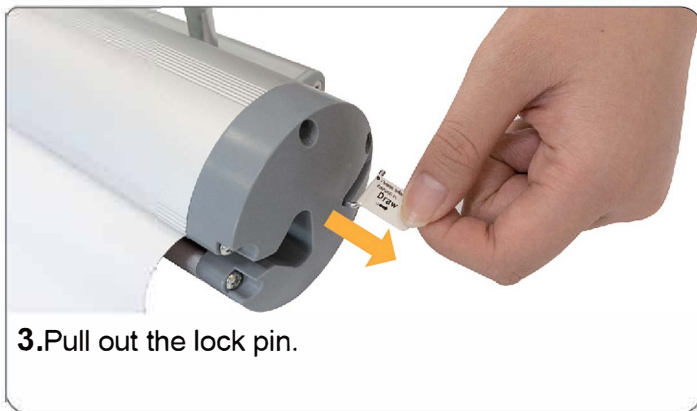
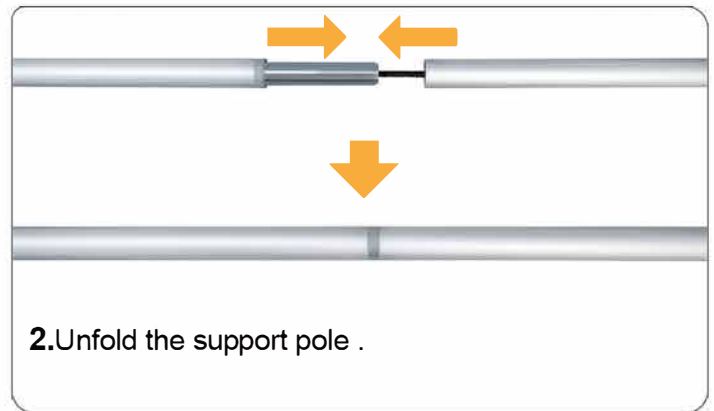
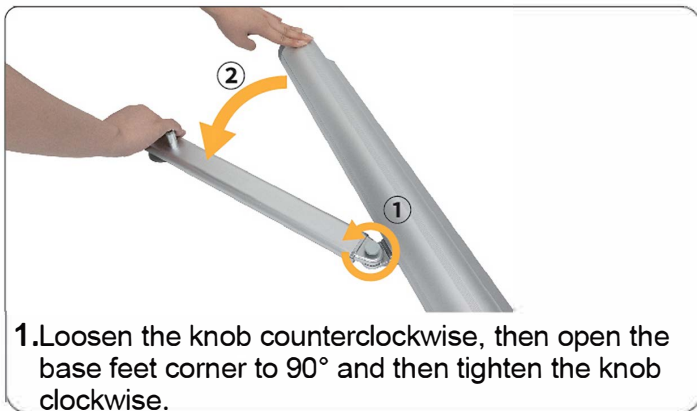


**5.** Hold the poster , pull out the lock pin.  
*(It is used to prevent graphic from being retracted into the base.)*



**6.** Let the poster scroll into the base slowly, then finish the installation.

# Product assembly instruction

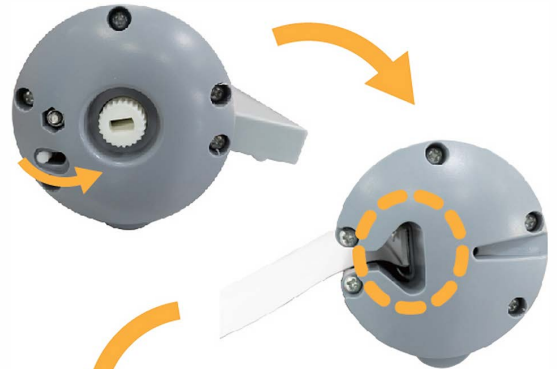


# OUTDOOR ROLL UP BANNER FUNCTION INSTRUCTION

To change the graphic, please follow these steps:

## STEP 1

First, move the lever on the side to release the spring and pull out the banner completely.



## STEP 2

Then, pull the picture slot out from the side to align it with the banner outlet.



## STEP 3

Insert the lock pin into the hole on the side.



## STEP 4

Remove the knob from the bottom of the base and insert it into the slot on the side. Then turn it clockwise **25** times.

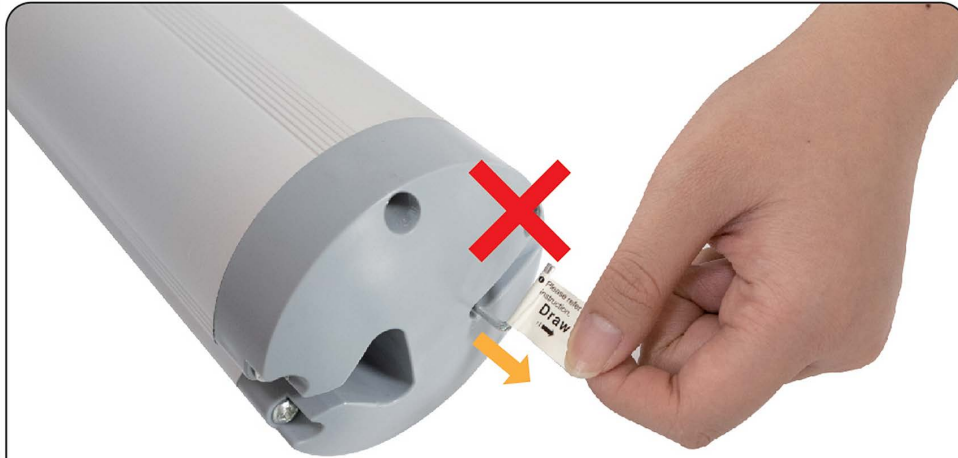


## STEP 5

Finally, repeat the steps to install the graphic.



# OUTDOOR ROLL UP BANNER FUNCTION INSTRUCTION



## TIPS.1

Do not pull out the side latch before the banner is installed. This will cause the spring inside the base to release. If you accidentally pull out the latch, please follow **step 3 and step 4 of the "change the graphic" instructions.**



## TIPS.2

Please place the lock pin and knob in the dedicated slot at the bottom of the base when not in use, to prevent loss.